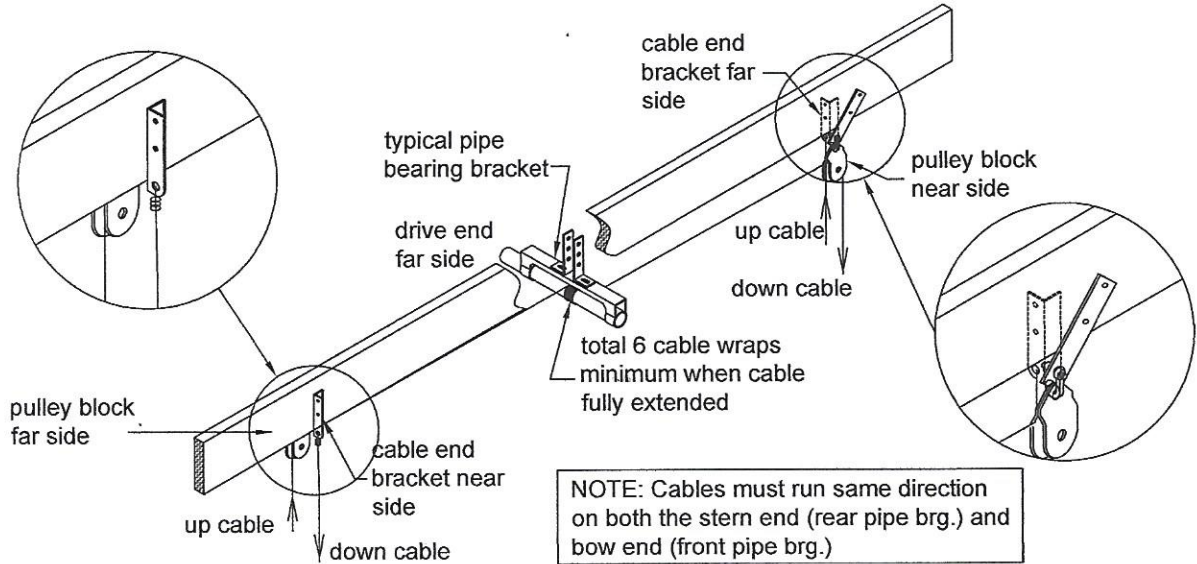
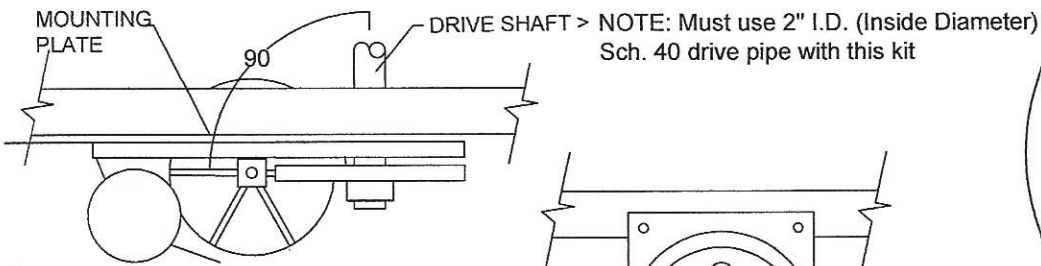


CABLE ARRANGEMENT

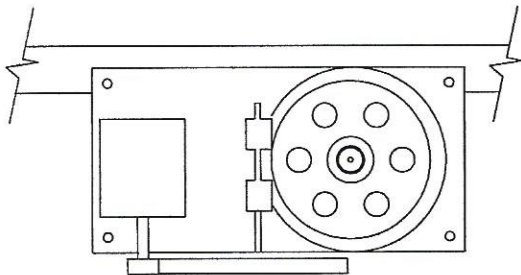
Compound Cable System



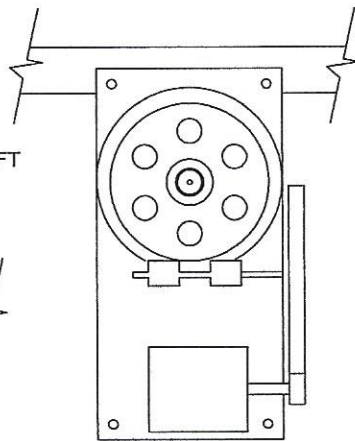
DRIVE ORIENTATION



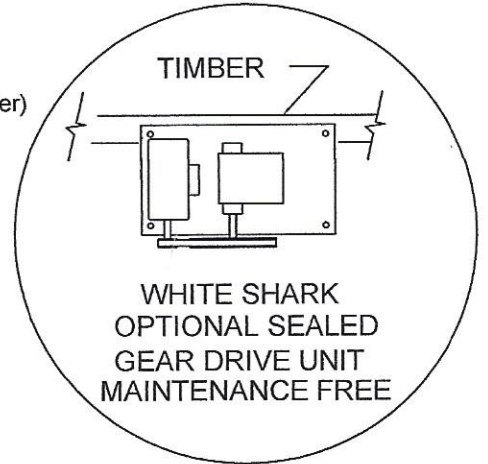
MOUNTING PLATE MUST BE 90° TO DRIVE SHAFT IN BOTH HORIZONTAL AND VERTICAL PLANES USE SHIMS AS REQUIRED



BULL GEAR MUST TURN CLOCKWISE WHEN LOWERING BOAT



ALTERNATE MOUNT POSITION



229
American
Power
Moist®

CABLE ARRANGEMENT

Straight Lift System

