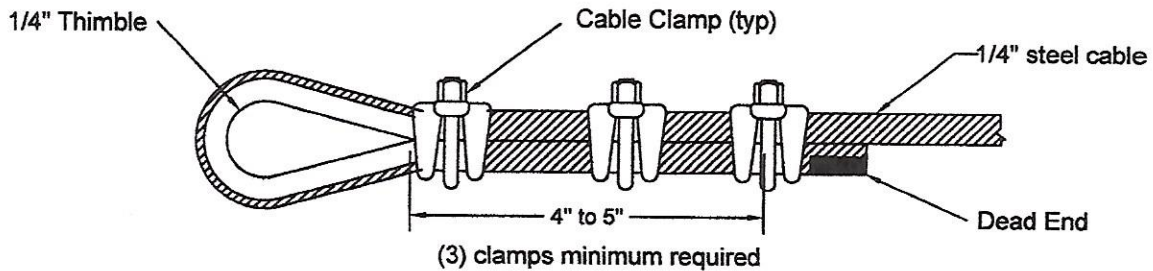


# CABLE TERMINATION-INSTALLATION GUIDE



## TO APPLY CABLE CLAMPS:

Apply exactly as shown above. The "U" section is in direct contact with dead end of cable. Apply first clamp one base width from dead end. Apply second clamp as close as possible to loop. Apply third clamp between the two clamps. Apply initial load to cable system and retighten nuts to torque requirements listed below. Cable will stretch and shrink in diameter when load is applied. Inspect periodically and retighten to torque value.

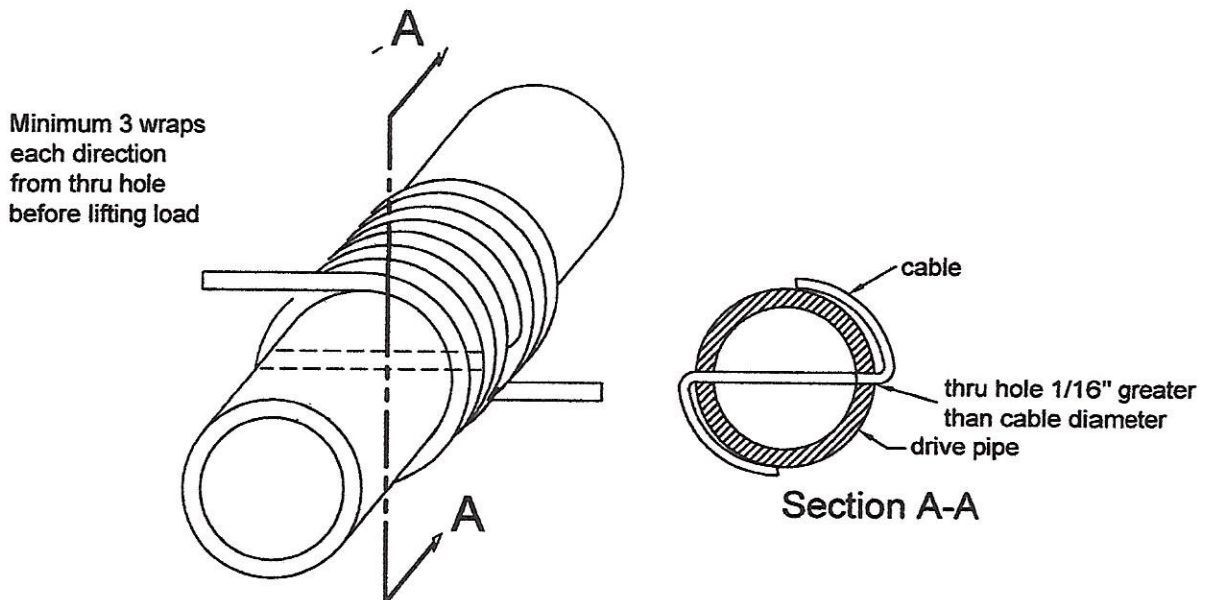
## TORQUE REQUIREMENTS PER CABLE SIZE:

1/4" CABLE = 15 FT. LBS. TORQUE

5/16" CABLE = 30 FT. LBS. TORQUE

# CAUTION

Failure to terminate cable ends according to these instructions or failure to periodically check and retorque clamp nuts will result in reduction of efficiency rating and may cause personal injury or property damage.



## MOTOR WIRING SIZE REQUIREMENTS

(SINGLE PHASE MOTOR)

HP	VOLTAGE	MINIMUM WIRE GAGE FOR BRANCH CIRCUITS INDICATED			
		0-50 FT	100 FT	200 FT	500 FT
3/4	230	14	12	10	6
	115	12	8	6	2
1 or 1 1/2	230	14	10	8	4
	115	10	8	6	—

215

American  
Power  
Hoist®